

ORGANIC WASTE

ORGANIC WASTE THAT IS **LOOSE** OR IN PAPER BAGS ONLY.

FOOD WASTE

including fresh, frozen, dried, cooked, and prepared food, as well as table scraps.

- Food (cooked, raw, rotten)
- Fruits and vegetables, pasta, bread and grains, flour and sugar
- Dairy products, candy and confections
- Coffee (beans, grounds and filters) and tea bags
- Meat, bones and fish including pet food
- Crab and lobster shells, egg shells, nut shells

SOILED PAPER AND CARDBOARD

- Food-soiled paper plates and cups, soiled cardboard from food containers (pizza boxes)
- Food-soiled paper towels, facial tissue, and paper napkins

GREEN WASTE

- Dead leaves, garden waste: flowers, plants, coniferous pine needles, hedge trimmings, and weeds (no exotic or invasive plants)
- Grass, sawdust, bark, wood chips, house plants

OTHER ITEMS

- Cold fireplace ashes – after 4 weeks, tobacco and cigarette paper
- Hair, animal fur, pet litter (cats, rabbits, hamsters)



**NO PLASTIC BAG IN MY BIN!
EVEN IF IT IS COMPOSTABLE.**

ULTIMATE WASTE

GARBAGE ITEMS ARE AT THE END OF THEIR LIFE CYCLE AND CANNOT BE DEPOSITED IN THE COMPOST OR RECYCLE BIN NOR THE ECOCENTRE OR AT A SECOND HAND STORE (THRIFT SHOP) AND ARE DESTINED TO LANDFILL.

ACCEPTED ITEMS:

- Diapers
- Broken toys
- Vape pens
- Brushes and mirrors
- Broken dishes and porcelaine
- Dishwashing gloves and sponges
- Plastic straws
- Plastic toothbrushes
- Plastics bags that are non-strechable with your thumb (chip bags, cracker and cookie bags, granola bar wrappers...)
- All compostable plastics

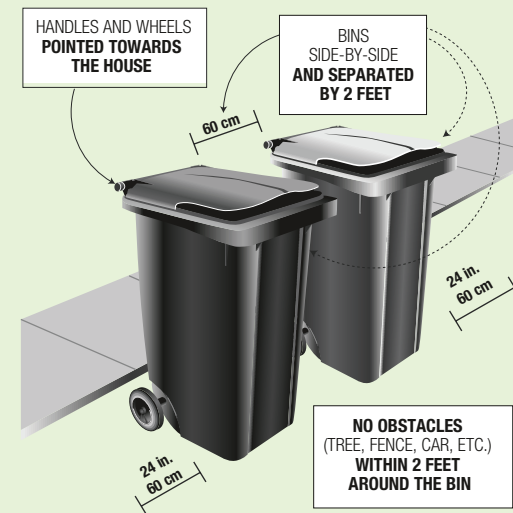
MOBILE ECOCENTRE: (See calendar)

ONLY THE FOLLOWING ITEMS ARE ACCEPTED:

Metal, construction, renovation and demolition (CRD) waste, household or garden furniture, table, chair, couch, mattress, box spring, bed frame, desk, bookcase, shelving. Electronic waste without halocarbons: stove, dishwasher, washer, dryer, water tank.

REFUSED ITEMS:

Electronic waste with halocarbons (CFCs), tires and Household Hazardous Wastes (HHW). These items must be taken to an Ecocentre.



RECYCLABLE MATERIALS

CONTAINERS, PACKAGING AND PRINTED DOCUMENTS ONLY

CLEAN PAPER AND CARDBOARD

- Newspapers, flyers, and magazines
- Unsoiled brown paper
- Shredded paper (in a transparent bag) tied with a knot
- Paper bags
- Cardboard boxes and packaging
- Phonebooks and books (without covers or binding)
- Milk, cream, and juice cartons (without straw)

PLASTICS

All containers and lids with the following numbers:



- All stretchy plastic bags, stretchable packaging, and plastic film (tied together in a clear bag with a knot)

METAL

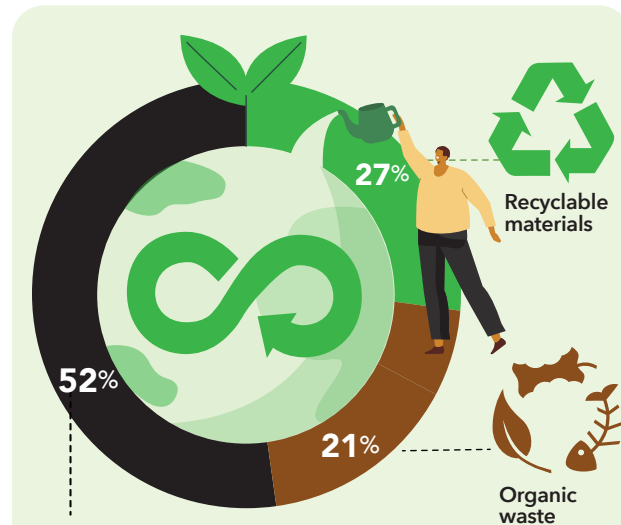
- Cans
- Beverage cans
- Aluminium foil
- Coat hangers (bundled)

GLASS

All glass bottles and containers of any colour



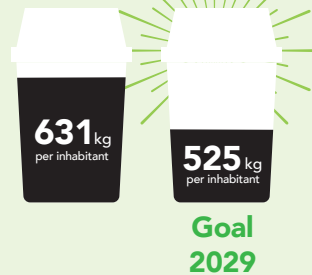
2023 COLLECTION CALENDAR



Ultimate waste in the MRC

Still today, the majority of materials collected are wasted.

Together in a collective effort for reduction of garbage to landfill!



Tél. : 819 425-8154

JANUARY						
S	M	T	W	T	F	S
1	2	3	4	5	6	7
8	9	10	11	12	13	14
15	16	17	18	19	20	21
22	23	24	25	26	27	28
29	30	31	1	2	3	4

FEBRUARY						
S	M	T	W	T	F	S
29	30	31	1	2	3	4
5	6	7	8	9	10	11
12	13	14	15	16	17	18
19	20	21	22	23	24	25
26	27	28	1	2	3	4

MARCH						
S	M	T	W	T	F	S
26	27	28	1	2	3	4
5	6	7	8	9	10	11
12	13	14	15	16	17	18
19	20	21	22	23	24	25
26	27	28	29	30	31	1

APRIL						
S	M	T	W	T	F	S
2	3	4	5	6	7	8
9	10	11	12	13	14	15
16	17	18	19	20	21	22
23	24	25	26	27	28	29
30	1	2	3	4	5	6

MAY						
S	M	T	W	T	F	S
30	1	2	3	4	5	6
7	8	9	10	11	12	13
14	15	16	17	18	19	20
21	22	23	24	25	26	27
28	29	30	31	1	2	3

JUNE						
S	M	T	W	T	F	S
28	29	30	31	1	2	3
4	5	6	7	8	9	10
11	12	13	14	15	16	17
18	19	20	21	22	23	24
25	26	27	28	29	30	1

JULY						
S	M	T	W	T	F	S
2	3	4	5	6	7	8
9	10	11	12	13	14	15
16	17	18	19	20	21	22
23	24	25	26	27	28	29
30	31	1	2	3	4	5

AUGUST						
S	M	T	W	T	F	S
30	31	1	2	3	4	5
6	7	8	9	10	11	12
13	14	15	16	17	18	17
20	21	22	23	24	25	26
27	28	29	30	31	1	2

SEPTEMBER						
S	M	T	W	T	F	S
27	28	29	30	31	1	2
3	4	5	6	7	8	9
10	11	12	13	14	15	16
17	18	19	20	21	22	23
24	25	26	27	28	29	30

OCTOBER						
S	M	T	W	T	F	S
1	2	3	4	5	6	7
8	9	10	11	12	13	14
15	16	17	18	19	20	21
24	23	24	25	26	27	28
29	30	31	1	2	3	4

NOVEMBER						
S	M	T	W	T	F	S
29	30	31	1	2	3	4
5	6	7	8	9	10	11
12	13	14	15	16	17	18
19	20	21	22	23	24	25
26	27	28	29	30	1	2

DECEMBER						
S	M	T	W	T	F	S
26	27	28	29	30	1	2
3	4	5	6	7	8	9
10	11	12	13	14	15	16
17	18	19	20	21	22	23
24	25	26	27	28	29	30

JANUARY 2024						
S	M	T	W	T	F	S
31	1	2	3	4	5	6
7	8	9	10	11	12	13
14	15	16	17	18	19	20
21	22	23	24	25	26	27
28	29	30	31	1	2	3

FEBRUARY 2024						
S	M	T	W	T	F	S
28	29	30	31	1	2	3
4	5	6	7	8	9	10
11	12	13	14	15	16	17
18	19	20	21	22	23	24
25	26	27	28	29	1	2

MARCH 2024						
S	M	T	W	T	F	S
25	26	27	28	29	1	2
3	4	5	6	7	8	9
10	11	12	13	14	15	16
17	18	19	20	21	22	23
24	25	26	27	28	29	30

- RECYCLABLE MATERIALS**
- ORGANIC WASTE + ULTIMATE WASTE**
- ORGANIC WASTE + RECYCLABLE MATERIALS**
- ORGANIC WASTE**
Collection of the brown bin, chemin de la Tranquillité

MOBILE ECOCENTRE

May 19-20-21-22
June 30, July 1-2-3
August 4-5-6-7
September 1-2-3-4
See reverse for more details.



FREE SERVICE

For MRC des Laurentides residents, NGOs and ICI (Industrial, Commercial and Institutional) ¹

- Recyclable materials
- Polystyrene and plastic #6
- Construction, Demolition and Renovation materials²
- Bulky items (oversized)
- Computers and electronic devices
- Household hazardous waste (HHW)
- Green waste³
- Tires and car batteries



¹Some restrictions apply. ²Maximum of 26 visits per year for citizens and NGOs. ³Only accepted at Sainte-Agathe-des-Monts and Mont-Tremblant ecocentres and at the Complexe environnemental de la Rouge – RIDR (all year round).

REGIONAL ECOCENTRE IN MONT-TREMBLANT

60, chemin de Brébeuf
Tel.: 819 425-8614

Opening hours:

January 1 to April 1 and September 18 to December 31
Tuesday to Friday: 9 a.m. to 4:30 p.m.
Saturday: 9 a.m. to 3 p.m.

April 2 to May 6

Monday to Friday: 9 a.m. to 4:30 p.m.
Saturday: 9 a.m. to 3 p.m.

May 7 to September 17

Monday to Friday: 9 a.m. to 4:30 p.m.
Saturday: 9 a.m. to 3 p.m.
Sunday: 10 a.m. to 3 p.m.

Closed on statutory holidays